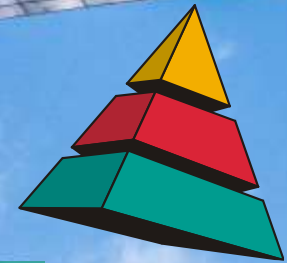
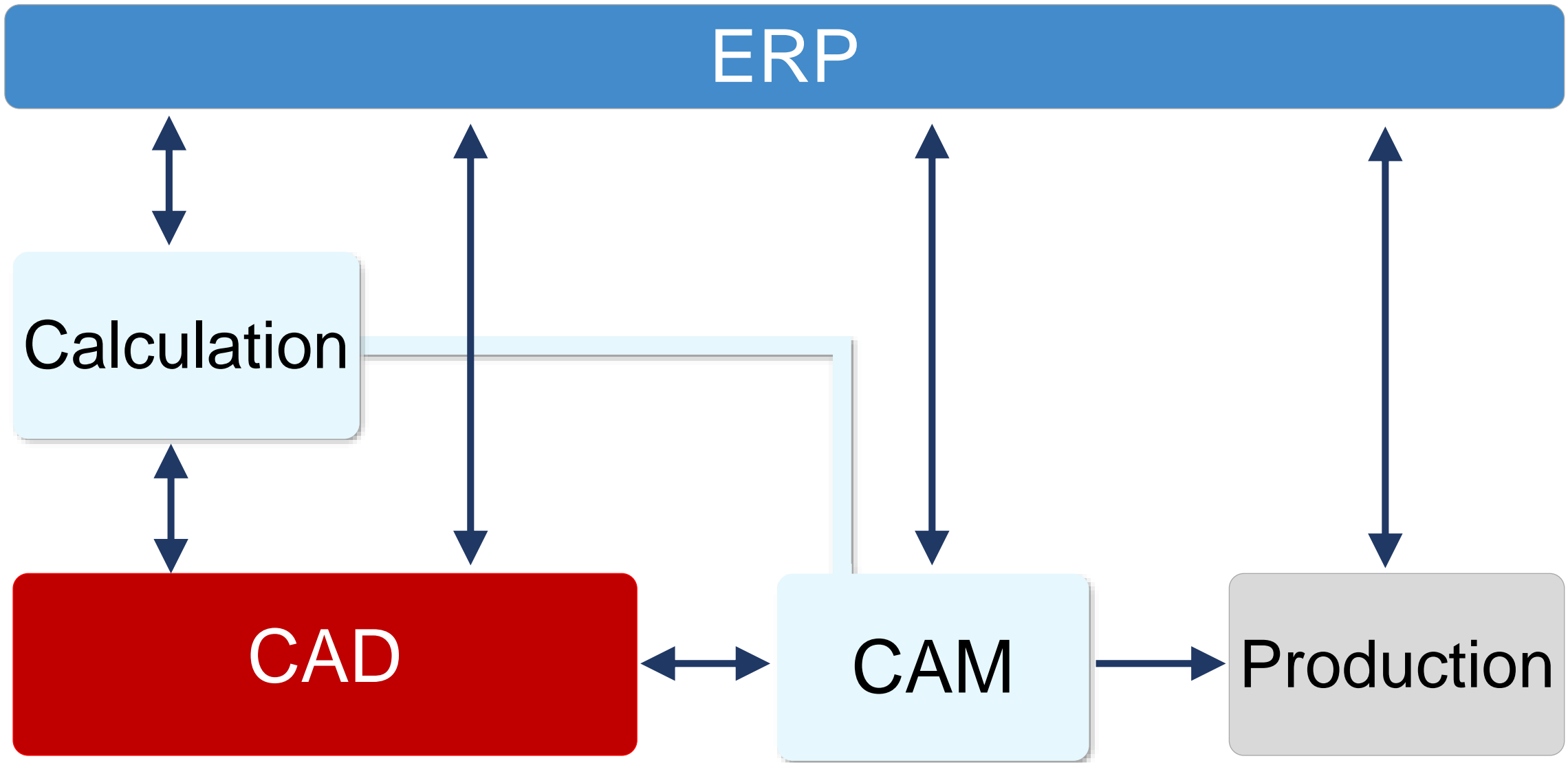


CAD-PLAN



CAD Software for Curtain Wall Design

Alexander Krüger
Head of Sales



CAD-PLAN



Headquarter:
CAD-PLAN Frankfurt am Main

Subsidiaries:

CAD-PLAN Netherlands, Belgium / Emmeloord
CAD-PLAN Czech Republic, Slovakia / Prague
CAD-PLAN Polsko / Jaskrów
CAD-PLAN Russia / Moskva
CAD-PLAN Italy/ Brescia
CAD-PLAN China / Wuhan

Partners/Abroad:

Austria/ Grabmayer & Sommer
Bulgaria/ Studio CAD
France/ Acosoft S.A.
Hungary/ HungaroCAD
India/ Orgadata India
Lithuania, Lettland/ AGA-CAD
Malaysia/ IAN Metal Engineering
Middle East/ Orgadata Middle East
Portugal/ Estupe
Romania/ Window & Facade Technologies
S.R.L.Slovenia/ DevASI Projektiranje
South Africa/ fenestration Software Solutions (Pty) Ltd.
South Korea/ LA Curtain Wall
Spain/ MEGA Ingenieras S.L.
Switzerland/ Acosoft S.A.
Turkey/ Orgadata

CAD-PLAN



Software Developer for Curtain Wall design

ATHENA, ATHENA-Complete

Reseller of flixo, SJ MEPLA

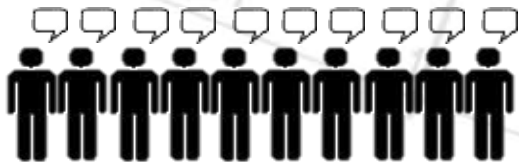
Services

Installation, Training, Support

Autodesk Partner

AutoCAD Architecture, (Revit)

CAD-PLAN



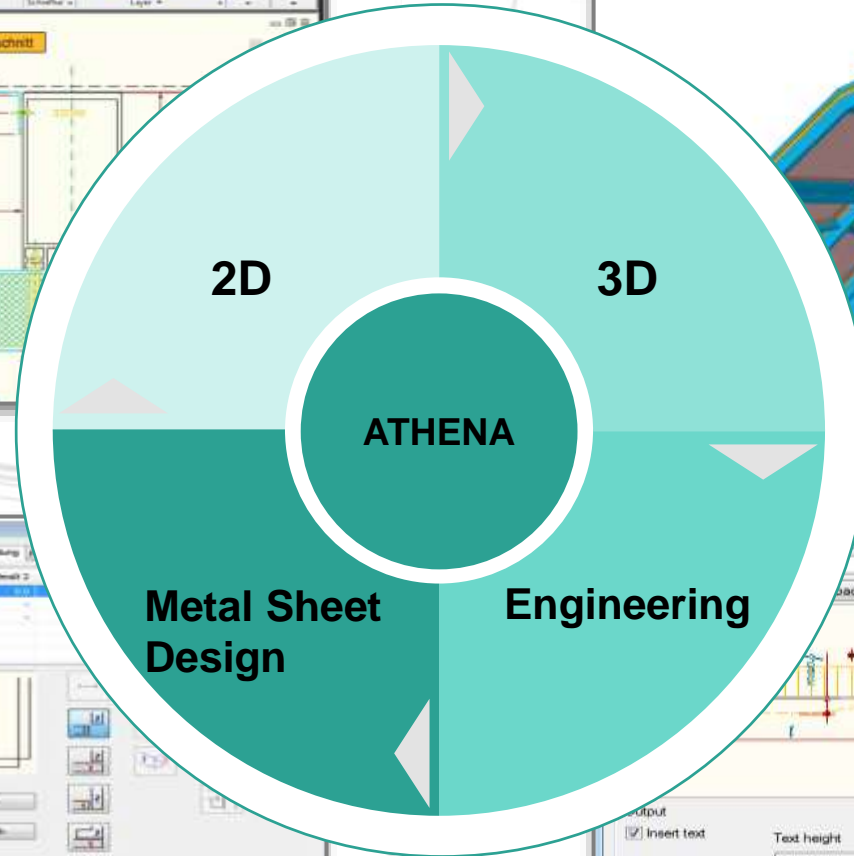
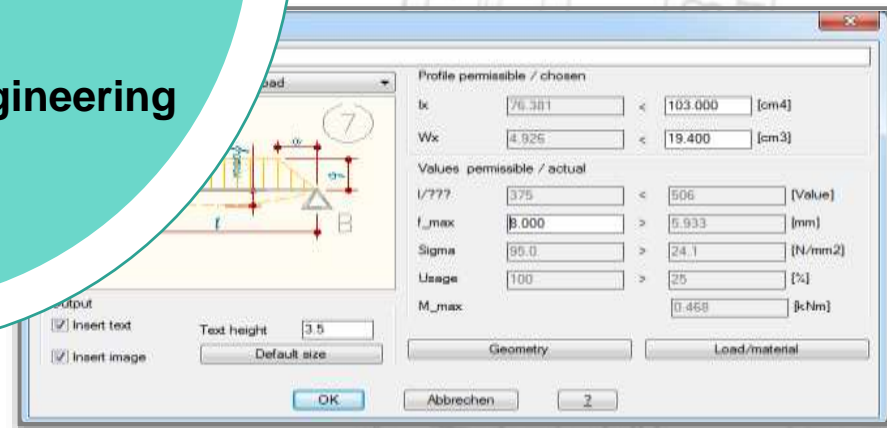
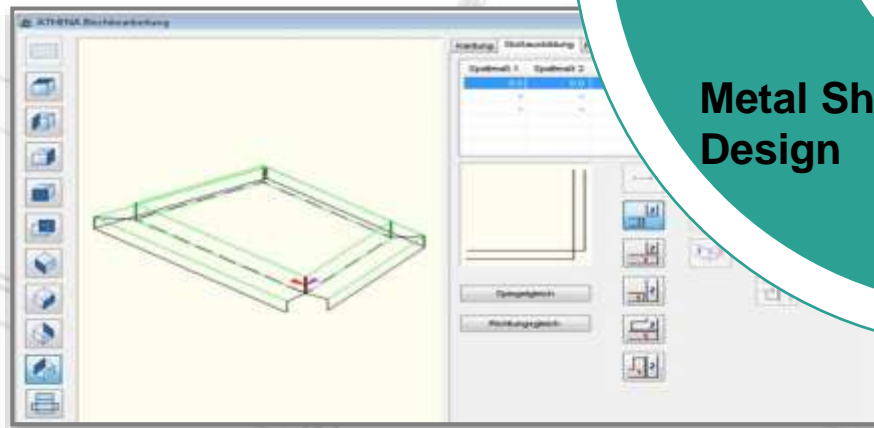
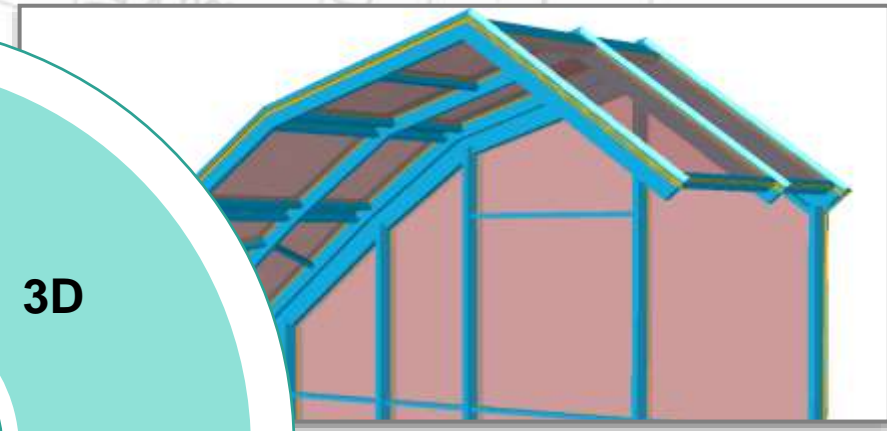
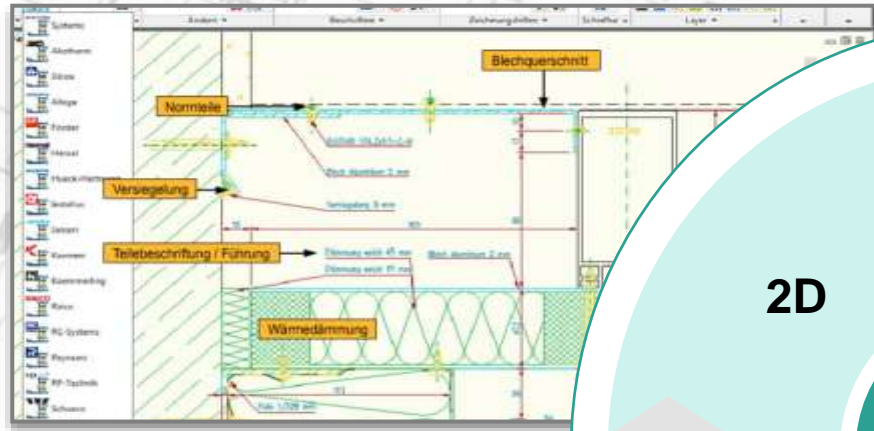
10 Languages

> 70 Countries

> 2,500 Companies

> 15,000 Users

CAD-PLAN



CAD-PLAN



ATHENA



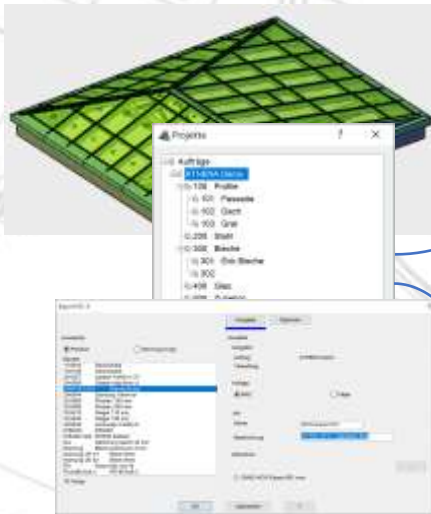
ORGADATA

E-R-PLUS®

CAD-PLAN



ATHENA



NCW Export:

Creates a *.ncw from the full model including single *.dxf contours of the profile cross-sections.

For the NCW-Export is a NCW Generator necessary. This can be included in your eluCad, or it can be purchased separately from CAD-PLAN

SAT Export:

Creates multiple *.sat files from the full model. Each file has positioning characteristics.

post-processor

eluCad:

customer version
without
3D import



eluCad:

customer version
including
3D import



SAT exports, which describe the solid bars including all machining operations, can be read in with various post processors and transferred to the CNC machining:

z.B.:
unilink, FP-CAM, Camprox, etc.

Restrictions of the postprocessor software with the respective machines should be discussed directly with the supplier.

machine



CAD-PLAN



Was 2D before Building Information Modeling?

3D working in the Future

Working in the BIM-Structure

Interaction of Software Products

Success Story from Amsterdam

CAD-PLAN



3D Working in the Future

3D Working in the Future

Working in the BIM-Structure

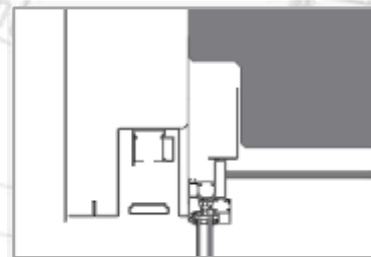
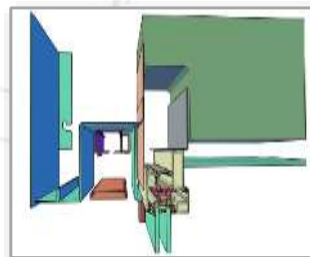
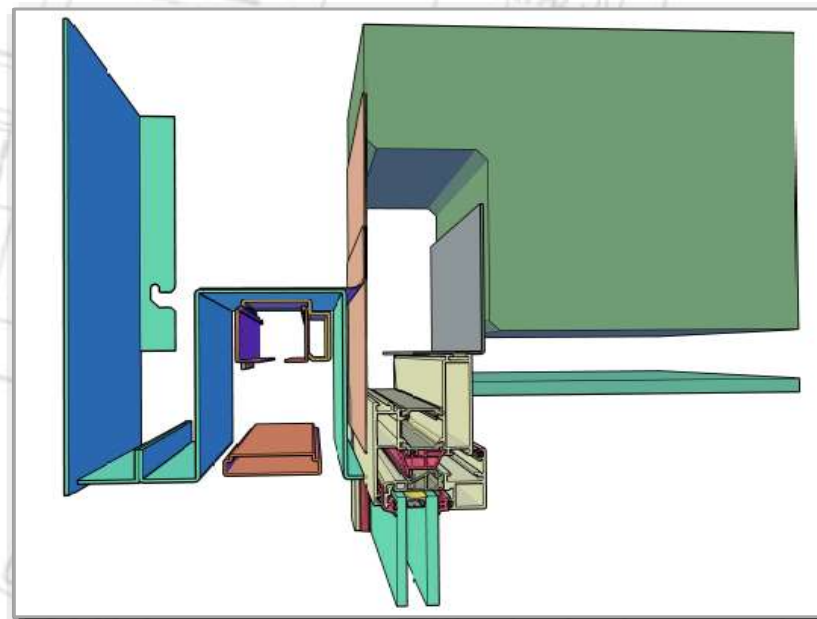
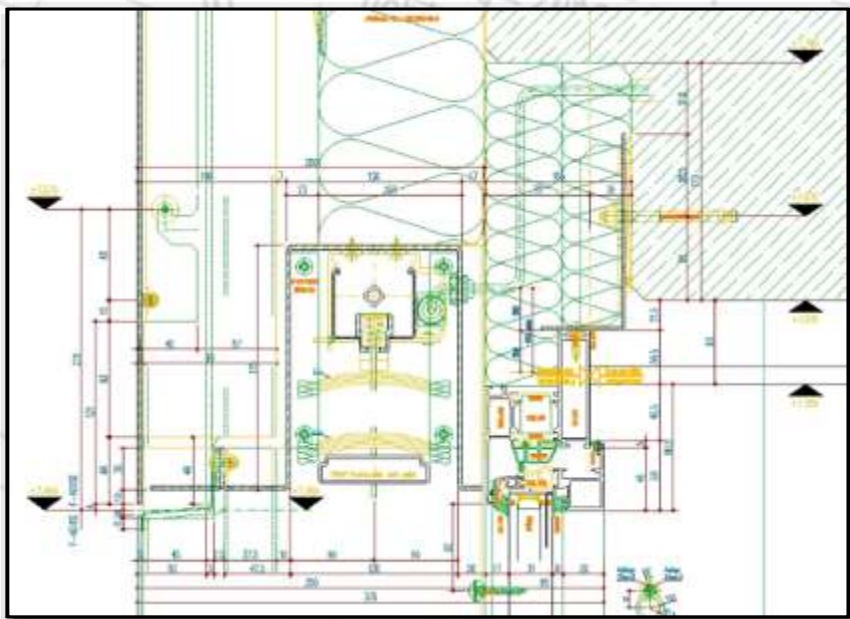
Interaction of Software Products

Success Story from Amsterdam

CAD-PLAN



3D Working in the Future



CAD-PLAN



Working in the BIM-Structure

3D Working in the Future

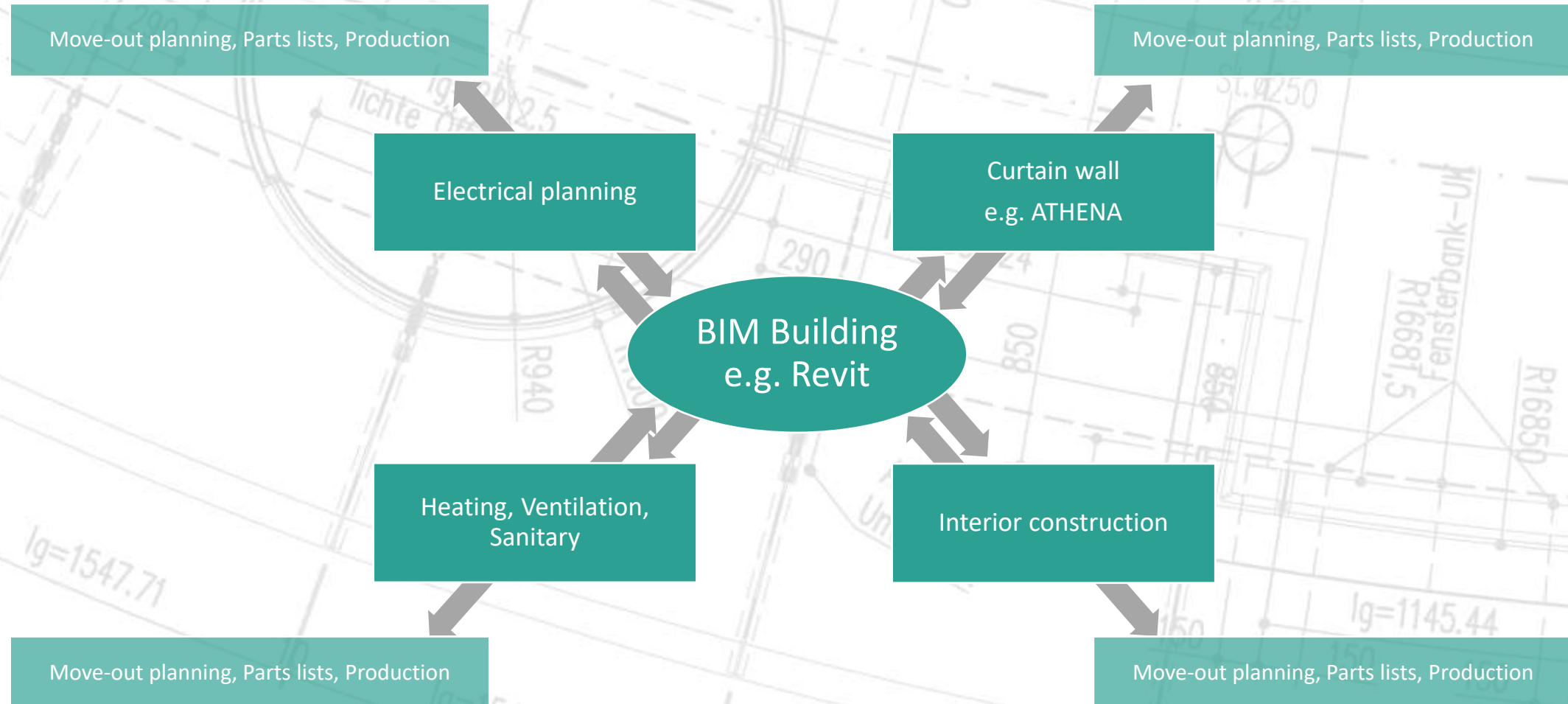
Working in the BIM-Structure

Interaction of Software Products

Success Story from Amsterdam

Working in the BIM-Structure

CAD-PLAN



Working in the BIM-Structure

CAD-PLAN



Level of Development

LOD 100

LOD 200

LOD 300

LOD 350

LOD 400

LOD 500



Working in the BIM-Structure

CAD-PLAN



construction module	Source / Software	Target / Implementation
✓ ground-plans	Revit	planning basis for 2D section drawing
✓ 2D section	ATHENA	basis for 3D bar generation
✓ window dummy	Revit	template for intelligent 3D element
✓ intelligent window element	LogiKal / SchüCAL	part of intelligent 3D element
✓ 3D profile	ATHENA	part of intelligent 3D element
✓ intelligent 3D element	ATHENA	association of all information

CAD-PLAN



Interaction of Software Products

3D Working in the Future

Working in the BIM-Structure

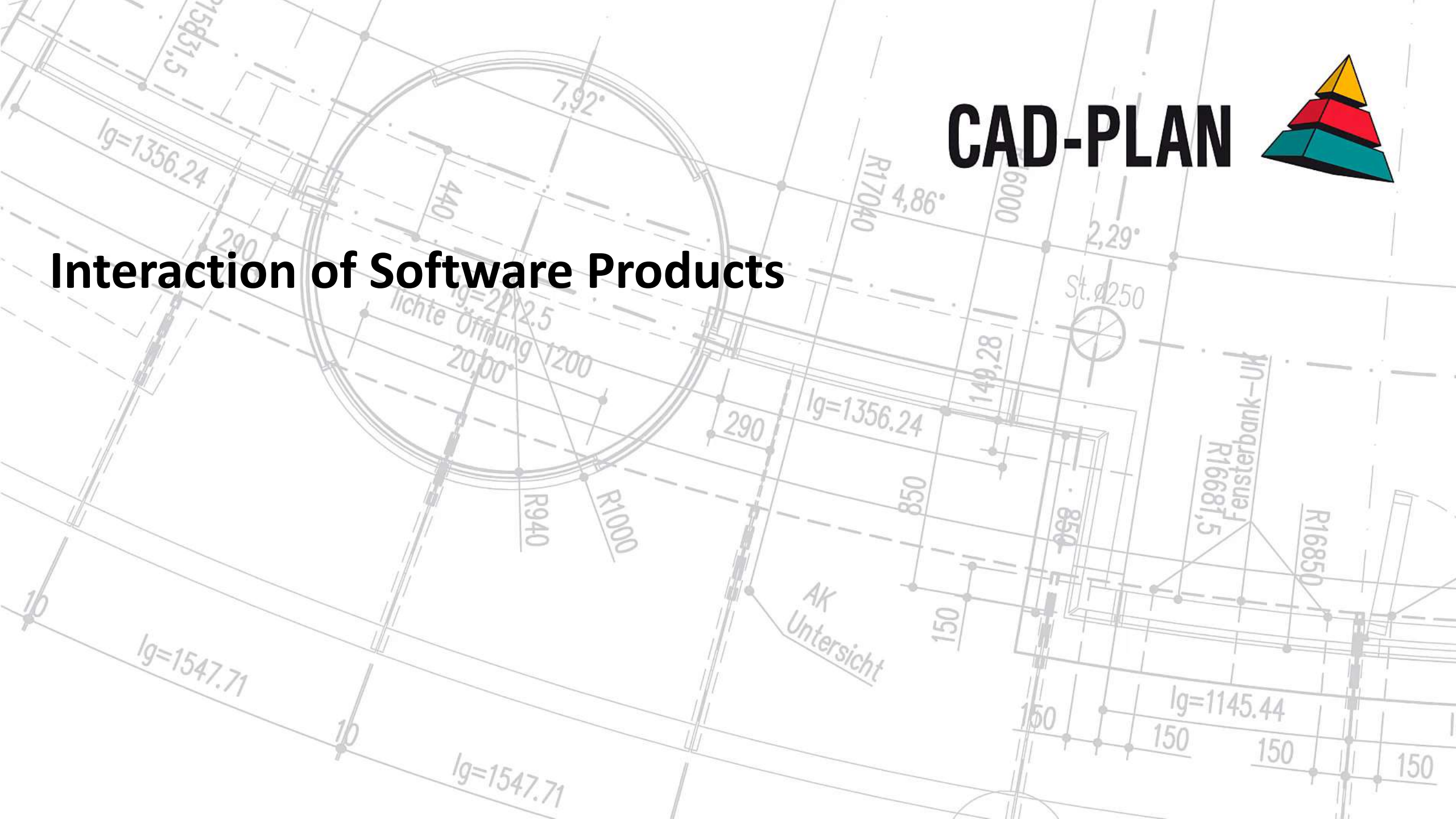
Interaction of Software Products

Success Story from Amsterdam

CAD-PLAN



Interaction of Software Products



CAD-PLAN



Interaction of Software Products

3D Working in the Future

Working in the BIM-Structure

Interaction of Software Products

Success Story from Amsterdam



CAD-PLAN



Beethovenstreet 400 in Amsterdam

DE GROOT  VISSER

BUILDING
HUMAN
ENERGY

 | syntek
teken en adviesbureau

UNS
UNSTUDIO



CAD-PLAN



Success Story from Amsterdam

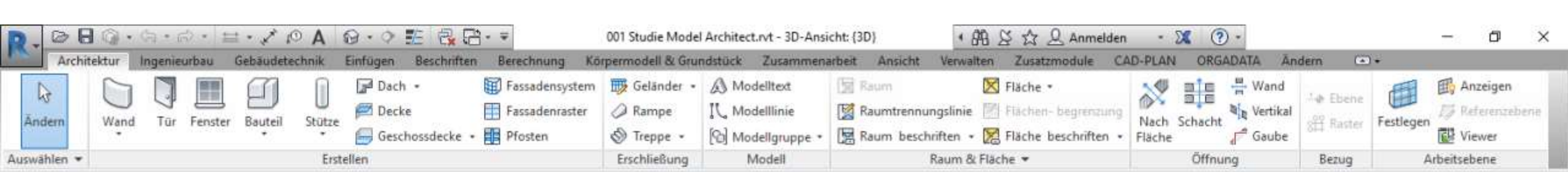
Beethovenstreet 400 in Amsterdam

Project Overview & Building Process

Technical Implementation

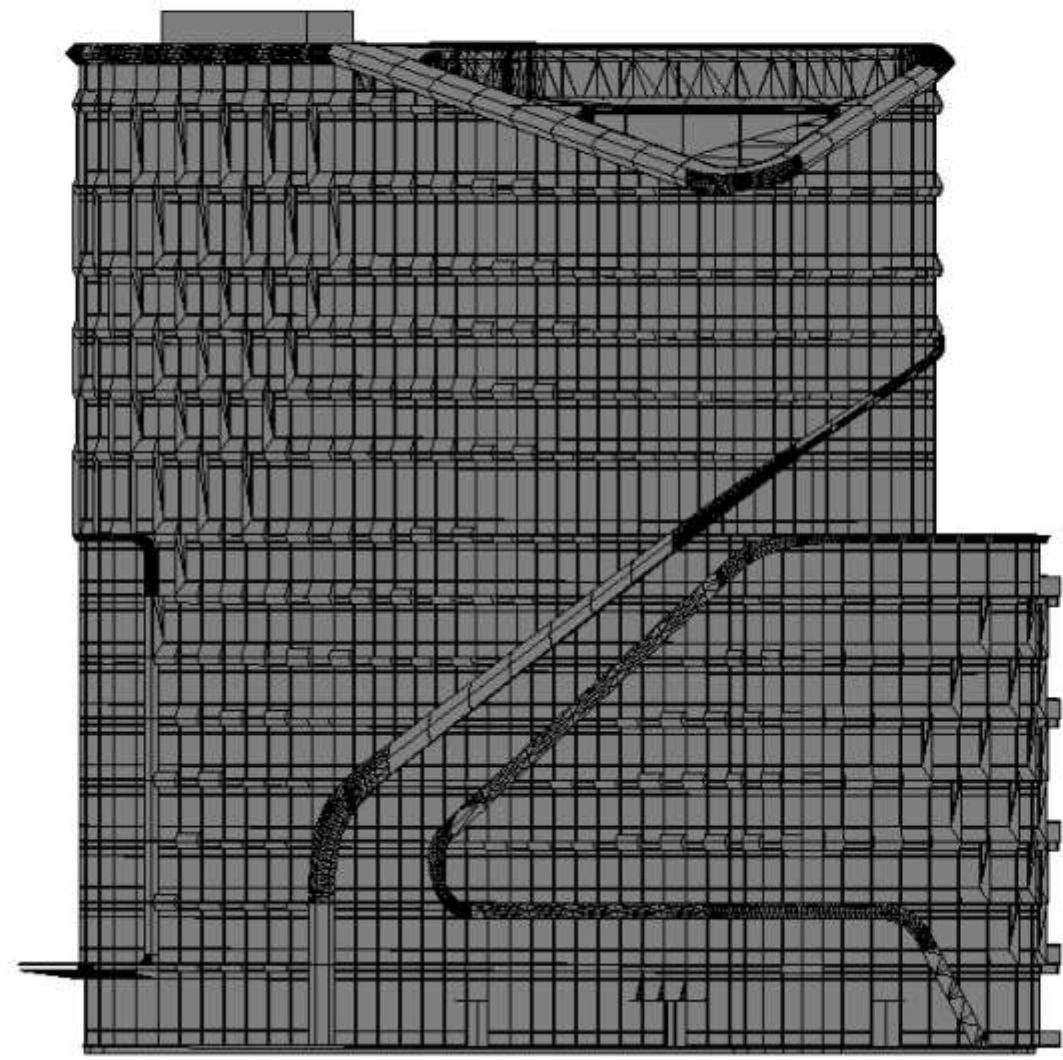
Sheet Metal Construction

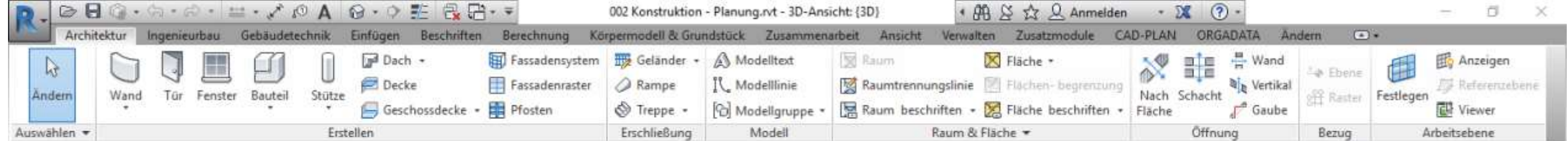




Projektbrowser - 001 Studie Model Ar...

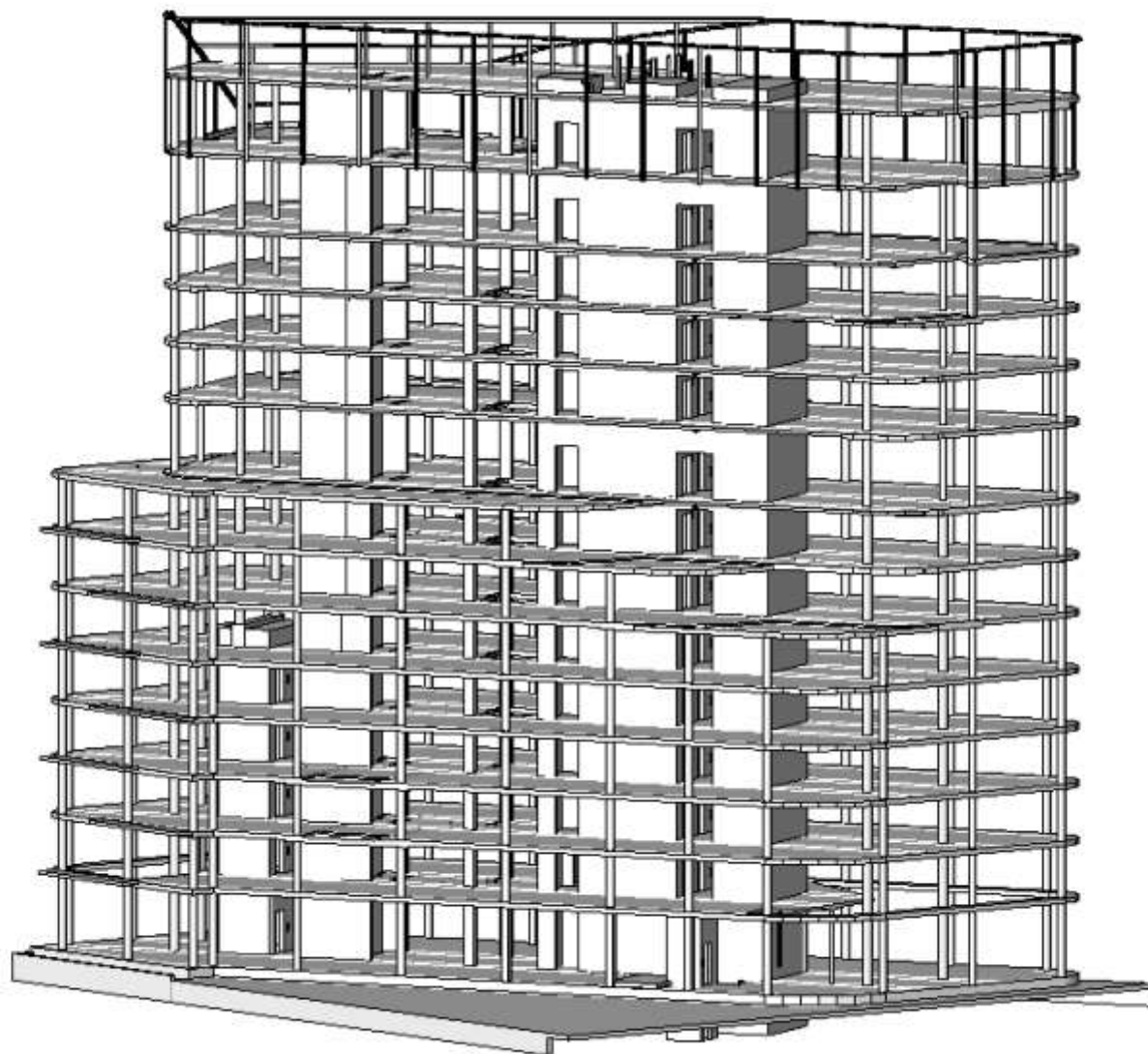
- Ansichten (3dbp)
 - ====00_Situation====
 - ====10_Plattegronden====
 - ====20_Gevel====
 - ====40_3D views====
 - 3D view
 - 3D-Ansicht: (3D)**
 - Legenden
 - Bauteillisten/Mengen
 - Pläne (3DBP)
 - Familien
 - Gruppen
 - Revit-Verknüpfungen



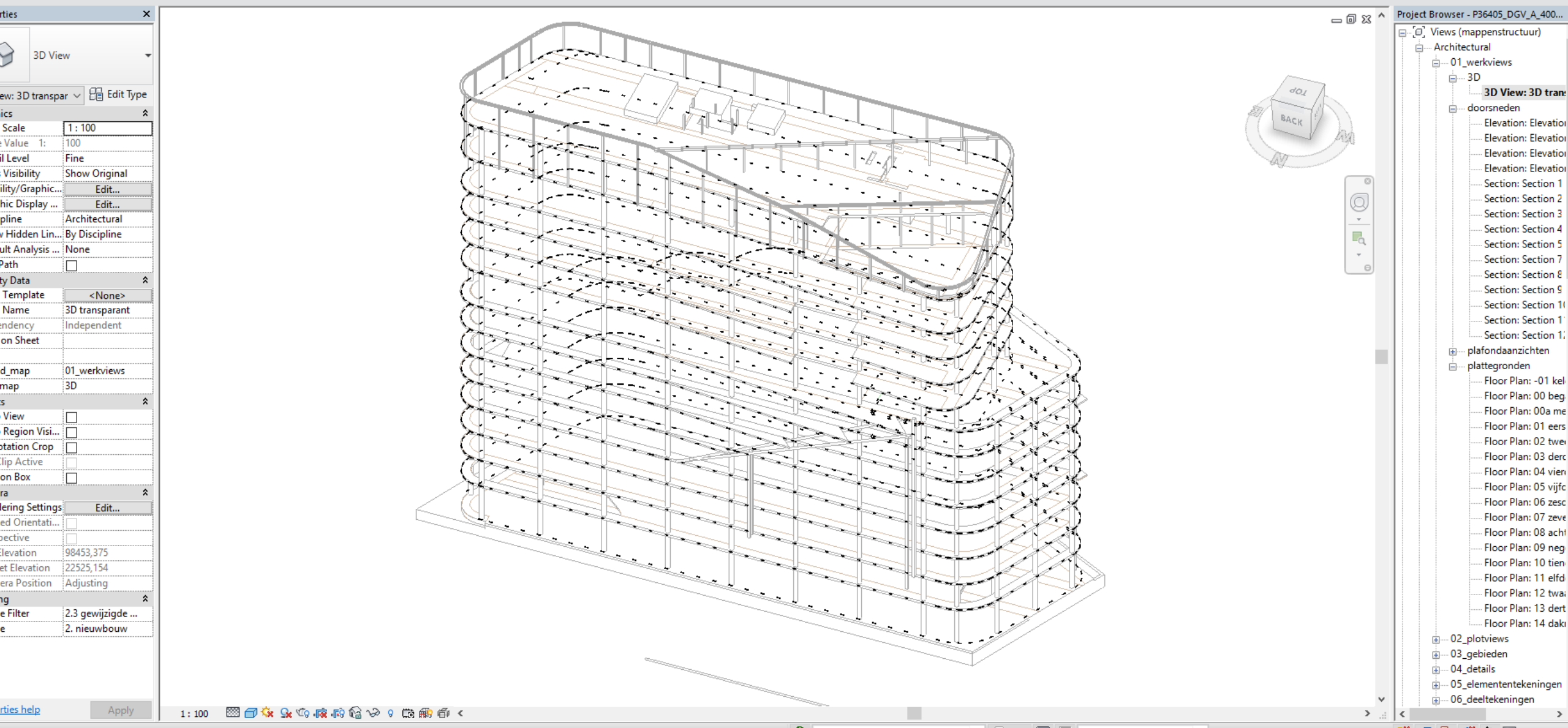
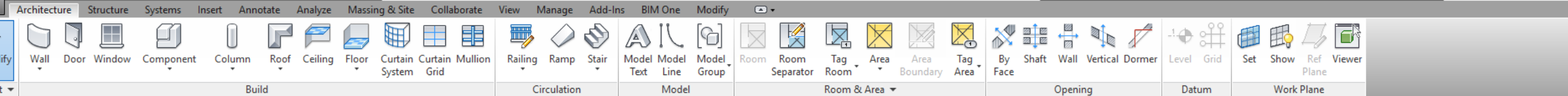


Projektbrowser - 002 Konstruktion - Pl...

- Ansichten (ALGEMEEN)
 - Tragwerkspläne (PALENPLAN)
 - Tragwerkspläne (PLATTEGRON)
 - 3D-Ansichten (3D View)
 - 3D-Ansichten (Overzicht kern)
 - Schnitte (DOORSNEDE)
 - Zeichenansichten (DETAIL)
- Legenden
- Bauteillisten/Mengen
- Pläne (BLADNUMMER)
 - 3D aanzicht 1
 - B0006
 - B0006-K1
 - B0006-K2
 - B0006-K3
 - B0006-K4
 - B0006-K5
 - B0006-K6
 - B0006-overz
 - B0008
 - B0009
 - B0010
 - B0011
 - B0012
 - B0013
 - B0014
 - B0015
 - B0016
 - B0017
 - B0018
 - B0019
 - B0101
 - B0102
 - B0102-K1
 - B0102-K2
 - B0102-K3
 - B0102-K4







CAD-PLAN



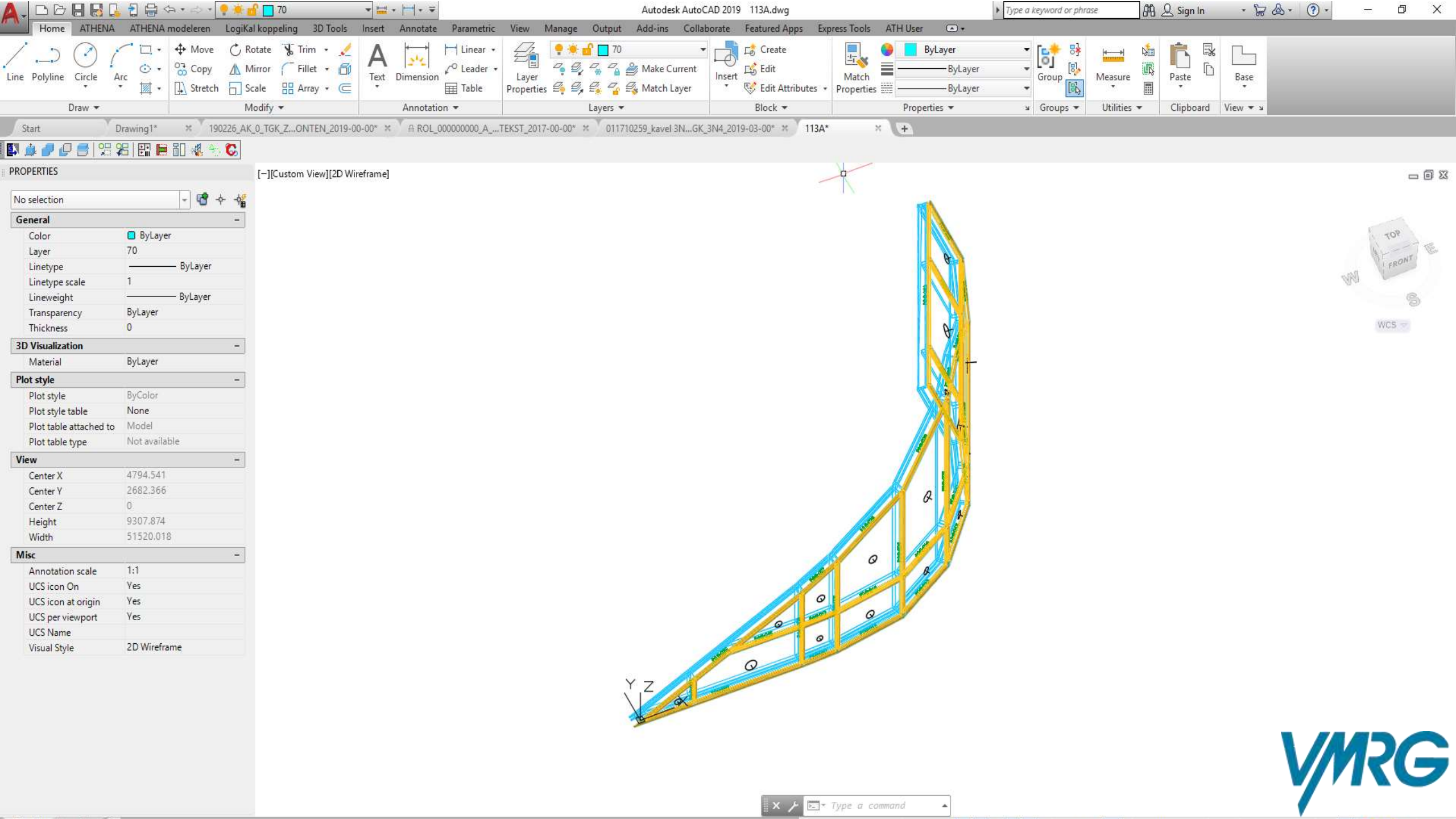
Success Story from Amsterdam

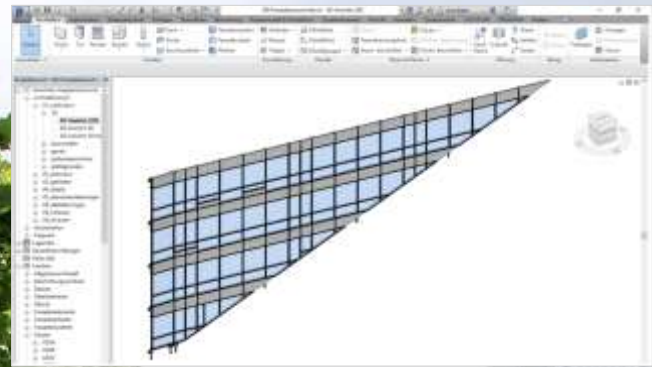
Beethovenstreet 400 in Amsterdam

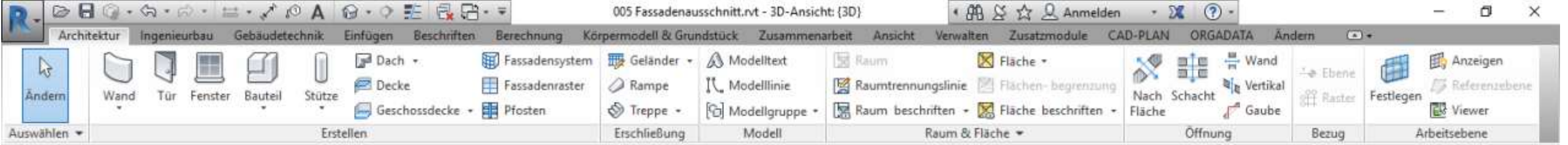
Project Overview & Building Process

Technical Implementation

Sheet Metall Construction

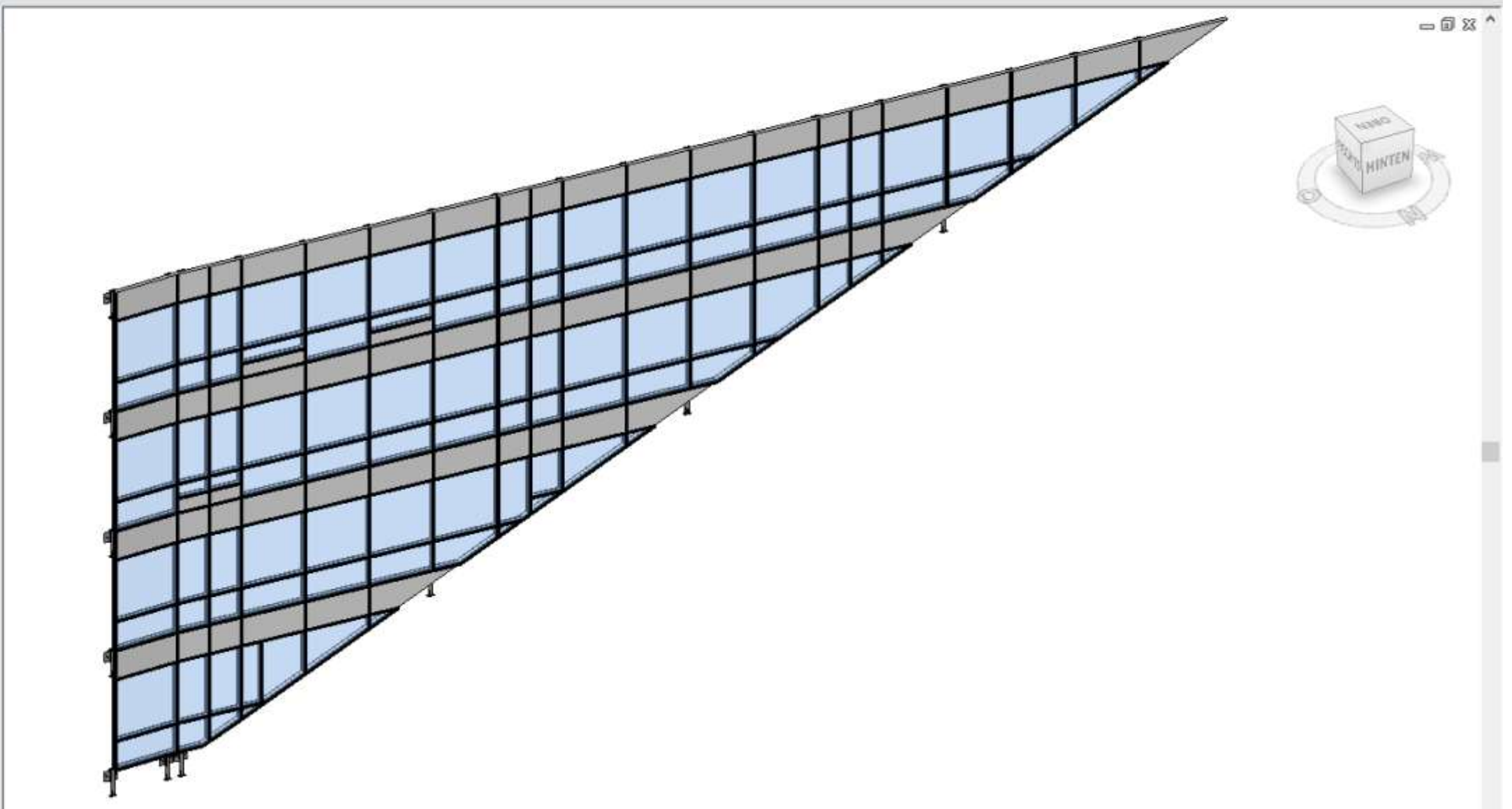






Projektbrowser - 005 Fassadenaussch...

- Ansichten (mappenstructuur)
 - Architektonisch
 - 01_werkviews
 - 3D
 - 3D-Ansicht: (3D)**
 - 3D-Ansicht: V0
 - 3D-Ansicht: 3D tra
 - doorsneden
 - gevels
 - plafondaanzichten
 - plattegronden
 - 02_plotviews
 - 03_gebieden
 - 04_details
 - 05_elemententekeningen
 - 06_deeltekeningen
 - 08_verkoop
 - 09_diversen
 - Koordination
 - Tragwerk
 - Legenden
 - Bauteillisten/Mengen
 - Pläne (all)
 - Familien
 - Allgemeines Modell
 - Beschriftungssymbole
 - Decken
 - Detailelemente
 - Dächer
 - Fassadenelemente
 - Fassadenpfosten
 - Fassadensysteme
 - Fenster
 - 020A
 - 020B
 - 020C





CAD-PLAN



Success Story from Potsdam

Beethovenstreet 400 in Amsterdam

Project Overview & Building Process

Technical Implementation

Sheet Metall Construction

003 Blechteile.rvt - 3D-Ansicht (3D)

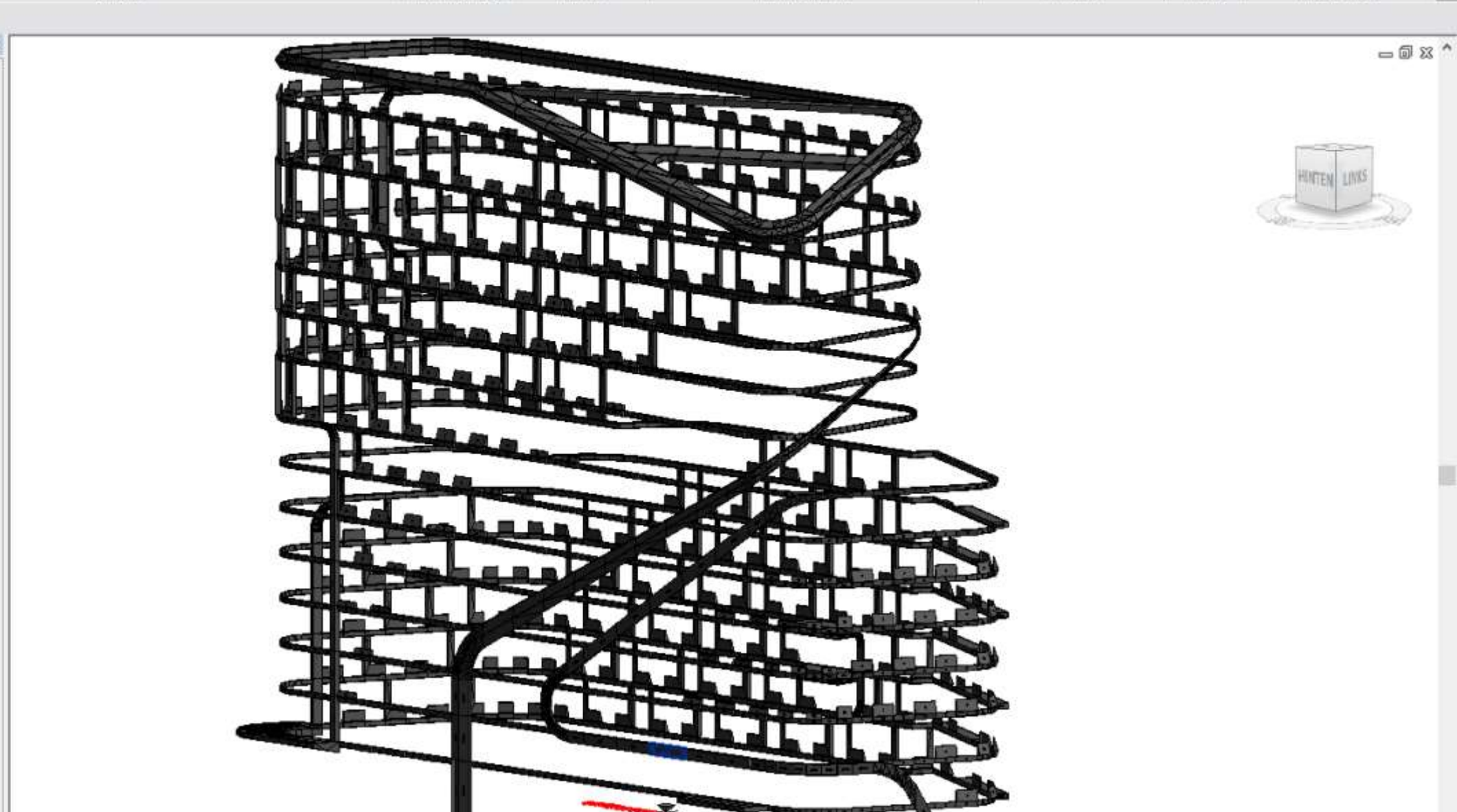
Architektur Ingenieurbau Gebäudetechnik Einfügen Beschriften Berechnung Körpermodell & Grundstück Zusammenarbeit Ansicht Verwalten Zusatzmodule CAD-PLAN ORGADATA Ändern

Ändern Wand Tür Fenster Bauteil Stütze Dach Decke Geschossdecke Fassadensystem Fassadenraster Pfosten Geländer Rampe Treppe Erschließung Modelltext Modelllinie Modellgruppe Raum Raumbrennungslinie Raum trennungslinie Raum beschriften Fläche Flächenbegrenzung Fläche beschriften Nach Fläche Schacht Vertikal Gaube Ebene Raster Festlegen Referenzebene Viewer

Auswählen Erstellen Erschließung Modell Raum & Fläche Öffnung Bezug Arbeitsebene

Projektbrowser - 003 Blechteile.rvt

- Ansichten (all)
 - Grundrisse (Floor Plan)
 - Deckenpläne (Ceiling Plan)
 - 3D-Ansichten (3D View)
 - Ansichten (Building Elevation)
- Legenden
- Bauteillisten/Mengen
- Pläne (all)
- Familien
- Gruppen
- Revit-Verknüpfungen





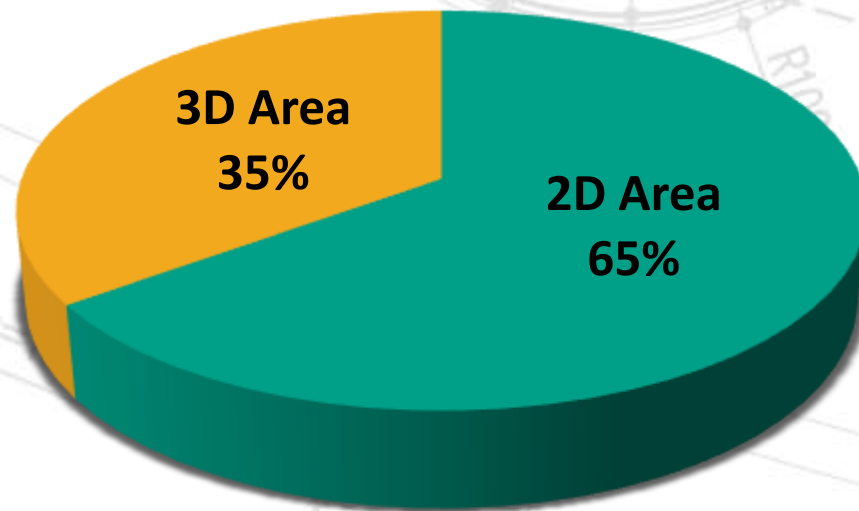


CAD-PLAN

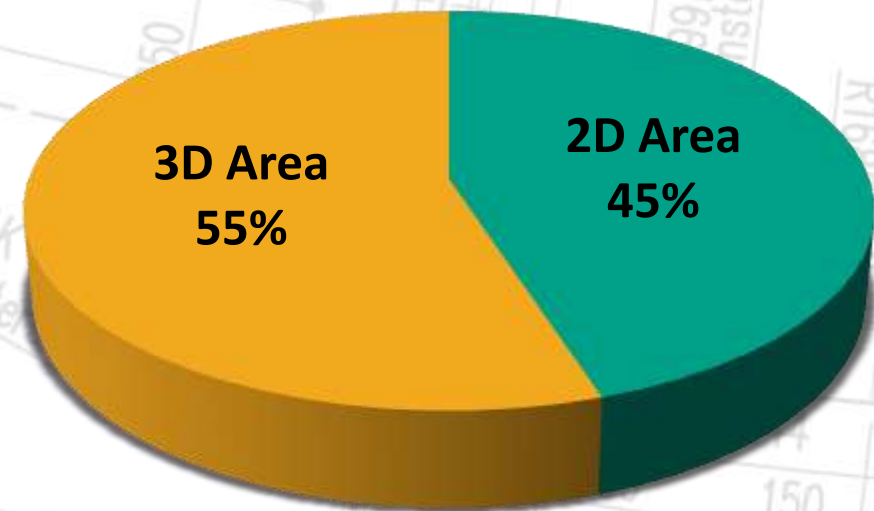


Was 2D before Building Information Modeling?

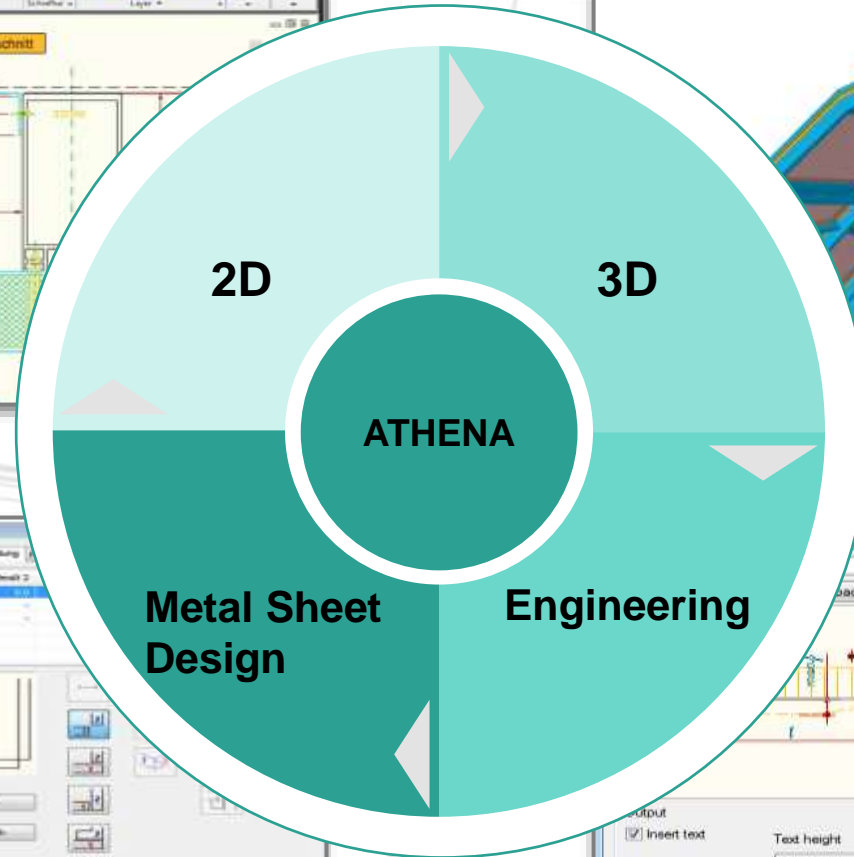
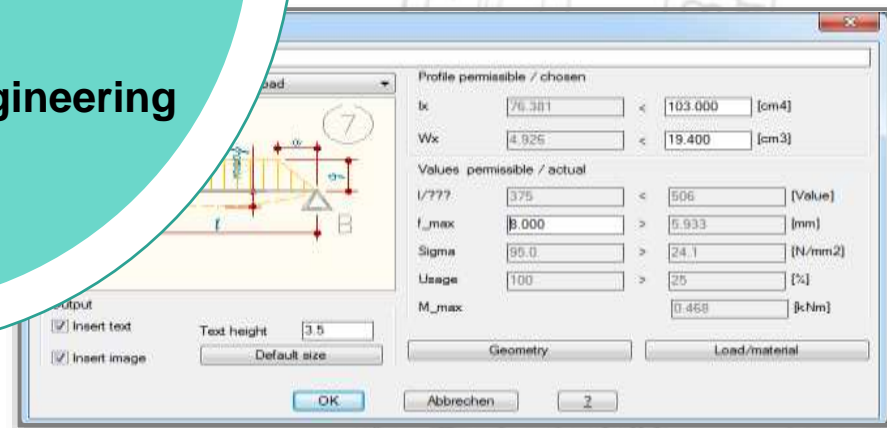
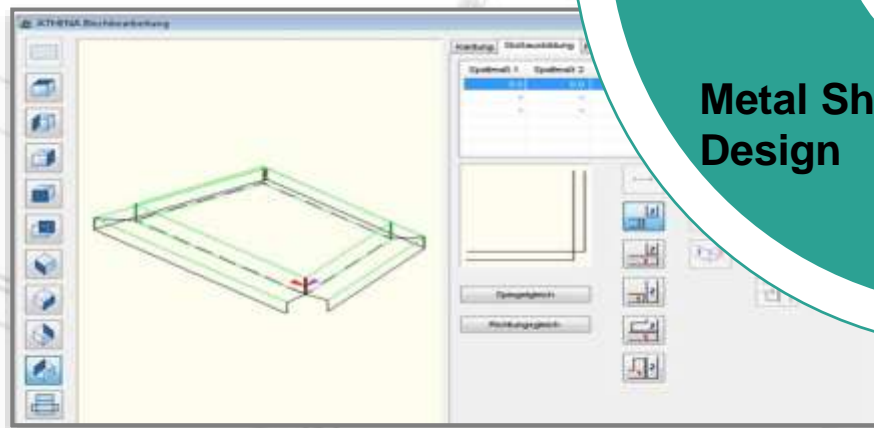
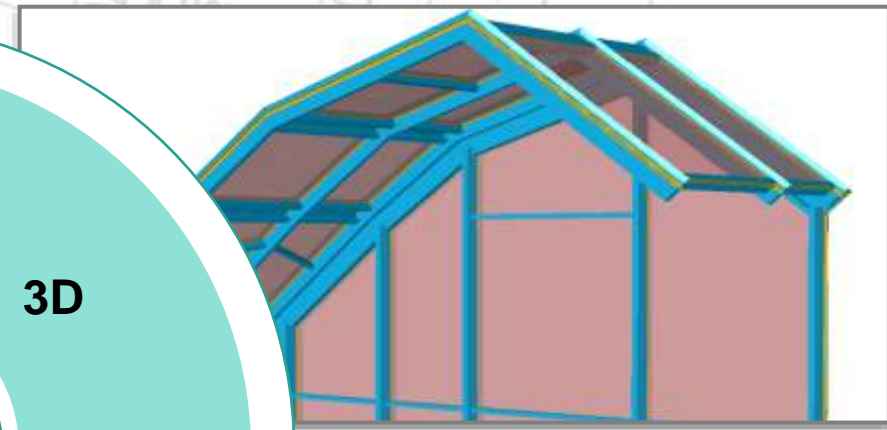
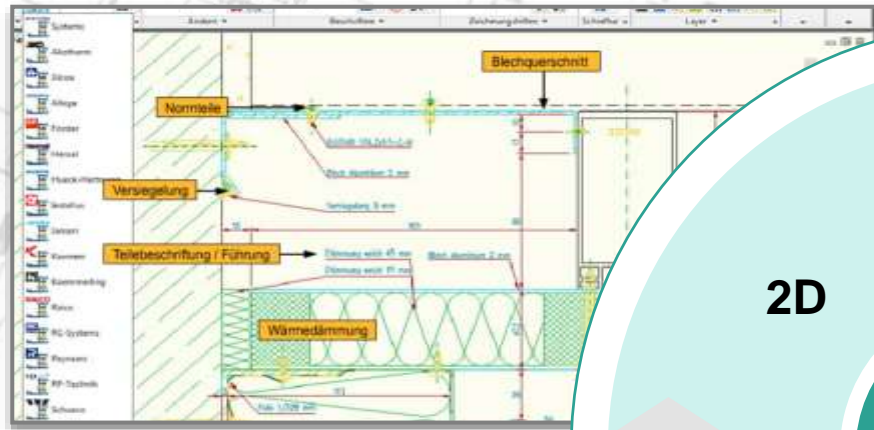
Today



2030



CAD-PLAN



Many thanks for your attention!

CAD-PLAN



CAD Software for Curtain Wall Design

Alexander Krüger

[Head of Sales for CAD-PLAN](#)

Dragos Stoca

[Reseller for CAD-PLAN in Romania](#)