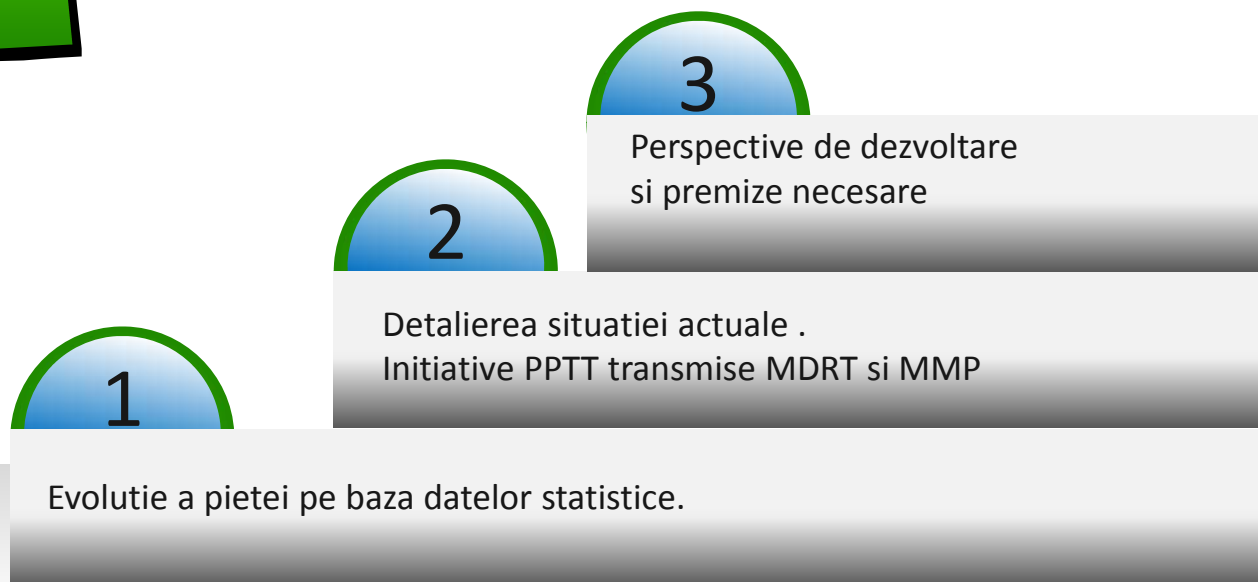




# PIATA DE SAMPLARIE SI FATADE ACTUALITATE SI PERSPECTIVE



# PIATA DE TAMPLARIE SI FATADE ACTUALITATE SI PERSPECTIVE



1

EVOLUTIA PIETEI PE BAZA  
DATELOR STATISTICE

	Industry				Construction				Trade				Services			
	2008	2009	2010	2011	2008	2009	2010	2011	2008	2009	2010	2011	2008	2009	2010	2011
EU-27	-0.2	-6.8	-3.5	0.5	-0.9	-7.8	-5.8	-2.9	1.4	-2.5	-1.3	0.2	2.0	-3.0	0.3	1.7
EA-17	0.4	-5.7	-3.5	0.2	-1.8	-8.1	-5.8	-3.8	0.9	-2.5	-1.0	0.2	1.6	-3.1	0.4	1.6
Belgium	0.0	-4.4	-2.8	-0.5	-2.0	-8.9	-5.2	-4.5	1.0	-2.4	-1.0	0.3	1.9	-2.6	1.0	1.3
Bulgaria	-2.0	-9.4	-6.4	-3.5	2.8	0.0	1.3	2.2	1.6	-0.9	-0.1	0.5	3.9	-0.9	2.6	2.4
Czech Republic	0.9	-10.6	-3.2	2.0	6.5	-10.4	-20.7	-10.0	15.8	-1.5	-7.2	-3.0	2.9	-2.5	-5.5	2.0
Denmark	0.6	-9.3	-6.8	-1.1	1.0	-2.2	-2.3	-1.8	1.7	-1.1	-0.3	1.0	1.7	-2.5	-1.7	0.3
Germany	2.2	-2.8	-2.4	2.7	-3.9	-13.6	-7.4	5.1	3.5	-3.0	-2.0	-0.4	1.0	-3.8	-2.9	1.0
Estonia	-3.6	-16.4	-6.0	2.8	0.7	1.3	2.1	3.7	-0.2	-2.9	-0.7	1.5	2.4	-1.2	3.2	3.4
Ireland	-5.0	-7.8	-5.7		0.5	-16.0	-18.2	0.2	-0.8	-8.7	-7.8	-3.4	4.5	-12.0	-2.3	7.3
Greece	-1.3	-4.4	-7.3		-8.6	-30.7	-26.3		1.6	-1.0	-6.0		3.1	-4.4	0.9	-2.5
Spain	1.1	-15.4	-6.3	-2.7	4.0	-1.3	-9.8		0.9	-0.8	-3.5		-0.7	0.4	-2.7	
France	-1.9	-4.2	-3.2	-0.4	-9.1	-23.0	-12.6	-15.6	-0.4	-5.2	-1.7	-0.7	-0.6	-6.3	-1.0	-0.5
Italy					2.3	-1.9	-1.4	-0.6	0.1	-1.3	-0.1	0.6	0.1	-2.8	2.0	2.1
Cyprus	2.4	-1.6	-2.6	-3.8												
Latvia	-7.2	-23.8	-4.3	6.6	3.9	-4.7	-5.8	-4.9	6.0	-2.9	-0.7	-0.2	1.8	-3.4	0.3	2.4
Lithuania	-5.0	-16.9	-7.6	4.4	0.7	-37.7	-18.7	8.9	-3.3	-20.3	-9.9	0.5	-0.3	-15.5	-6.7	7.9
Luxembourg	0.0	-3.5	-2.7	-0.9	8.1	-21.5	-17.7	3.8	5.9	-11.0	-8.2	2.4	6.8	-7.3	-5.5	7.2
Hungary	-0.5	-11.3	-1.2	3.4	0.9	-1.6	-0.6	-1.9	1.9				7.6			
Malta	-5.9	-9.5	-2.9	1.0	-5.3	-8.1	0.3	-1.8	3.4	-5.3	-0.7	-1.4	5.9	-2.5	4.4	3.2
Netherlands	1.1	-2.9	-2.4		-2.6	-7.1	-7.5	-5.1	-1.0				-0.8			
Austria	0.8	-4.0	-2.1	2.0	0.6	-2.4	-3.0		2.3	-0.7	-0.4		1.6	-1.4	-0.8	
Poland	2.3	-5.8	-0.4	2.0	-1.0	3.0	-1.0	2.1	1.7							
Portugal	-1.1	-5.7	-2.9	-1.3	4.4	3.9	1.3	7.6	2.5	0.6	-0.1	1.3	6.0	-1.0	2.4	2.7
Romania	-3.9	-14.1	-9.8	1.1	-2.0	-7.7	-8.0	-10.1	0.5	-3.2	-1.4	-2.5	1.4	-1.5	0.0	-2.2
Slovenia	-0.5	-9.5	-5.4	-1.9	7.3	-15.5	-14.8	-0.6	5.7	-4.2	-8.2	-0.4	4.1	-1.3	-7.2	-1.7
Slovakia	0.7	-15.2	-3.7	4.4	12.2	-1.4	-9.5	-13.6	3.5	-1.0	-2.6	-1.9	4.9	0.4	-0.2	-0.4
Finland	-2.4	-7.6	-4.5	-1.5	9.1	2.0	-2.6	-3.6	1.9							
Sweden	-0.1	-14.5	-3.5	2.5	5.2	-5.7	-1.8	2.4	-0.2	-4.5	0.8	1.5	5.6	-3.8	1.6	-0.3
United Kingdom	-4.5	-4.6	-2.7	-1.0	4.9	1.0	-0.6	7.7	0.1	-2.2	0.4	4.8	4.2	2.1	2.0	5.2

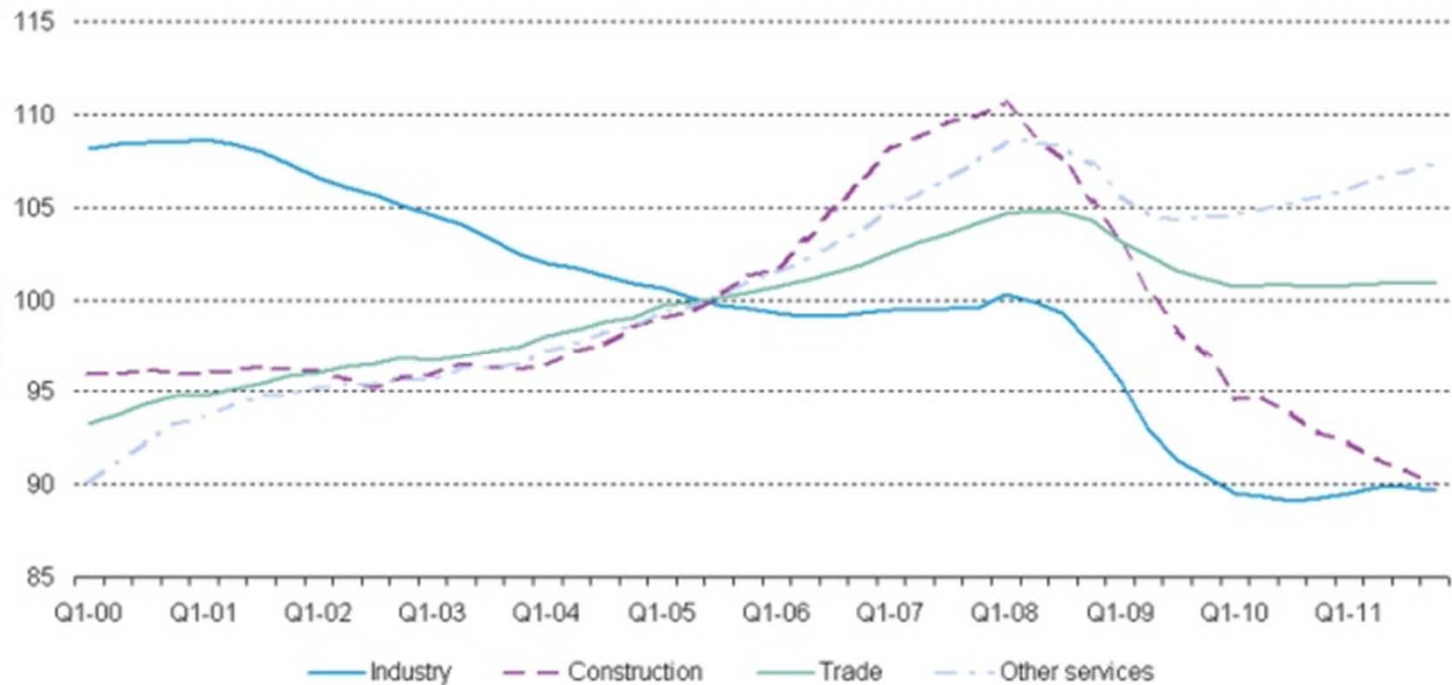
	gradul de ocupare a fortei de munca in <b>CONSTRUCTII</b>			
	2008	2009	2010	2011
EU 27	- 0.9	- 7.8	- 5.8	- 2.9
EA 17	- 1.8	- 8.1	- 5.8	- 3.8
<b>ROMANIA</b>	<b>-2.0</b>	<b>-7.7</b>	<b>-8.0</b>	<b>-10.1</b>

# PIATA DE TAMPLARIE SI FATADE ACTUALITATE SI PERSPECTIVE



EVOLUTIA PIETEI PE BAZA  
DATELOR STATISTICE

RATA DE OCUPARE A FORTEI DE MUNCA IN INDUSTRIE,  
CONSTRUCTII, COMERT SI ALTE SERVICII LA NIVELUL UE



Surse date: **Eurostat, INS**, vezi [www.wall-street.ro](http://www.wall-street.ro)

# PIATA DE TAMPLARIE SI FATADE ACTUALITATE SI PERSPECTIVE



EVOLUTIA PIETEI PE BAZA  
DATELOR STATISTICE

evolutia numarului de autorizatii de constructii emise  
trend descendent pentru constructii rezidentiale  
maxime din ce in ce mai mici in perioada verii

Autorizatiile de constructii 2008 - 2011



Surse date: **Eurostat, INS**, vezi [www.wall-street.ro](http://www.wall-street.ro)

## **IMPACT MAJOR ASUPRA ACTIVITATILOR COMPANIILOR DE EXECUTIE SI MONTAJ TAMPLARIE TERMOIZOLANTA SI FATADE CORTINA**



**scadere accelerata a gradului de ocupare a fortei de munca in sectorul constructii**



**scaderea dramatica a volumului de investitii a redus drastic activitatea firmelor specializate**



**reducere a numarului de persoane angajate**



**reducere a numarului de companii specializate in executie si montaj ferestre, usi si fatade cortina**



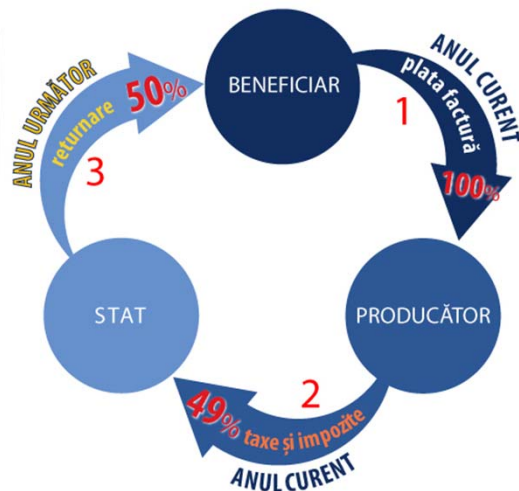
# PIATA DE TAMPLARIE SI FATADE ACTUALITATE SI PERSPECTIVE



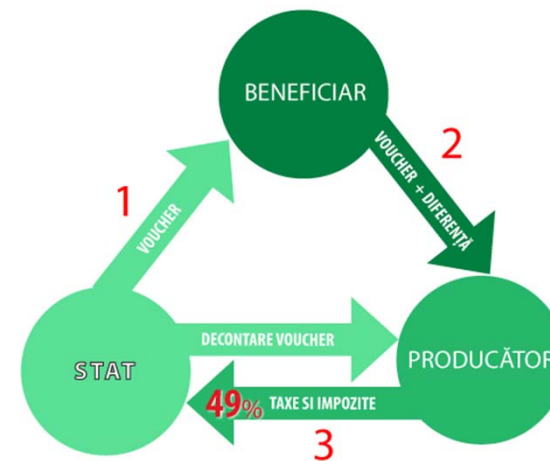
DETALIEREA  
SITUATIEI ACTUALE

## PROPUNERI DE PROGRAME NATIONALE INITIATE DE PPTT IN 2009 CA SOLUTII ANTICRIZA

### PROGRAMUL NAȚIONAL "FEREAȘTRA TERMOIZOLANTA" propus MDRT



### PROGRAMUL NAȚIONAL "RABLA" propus MMP



# PIATA DE TAMPLARIE SI FATADE ACTUALITATE SI PERSPECTIVE



DETALIEREA  
SITUATIEI ACTUALE

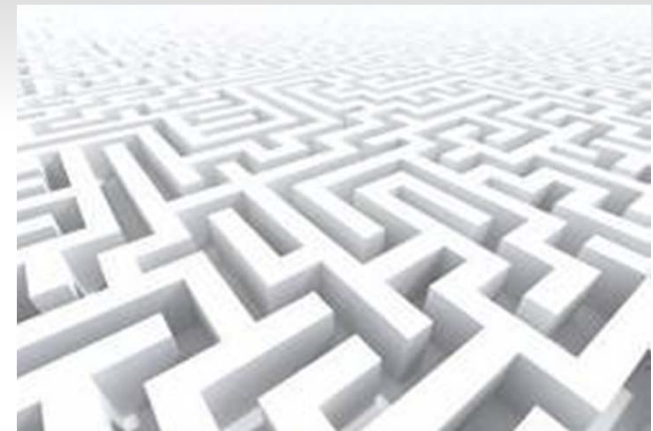
OBIECTIVE PROPUSE :

**SUSTINEREA PROPUNERII DE HOTARARE DE GUVERN**  
privind

## **CERTIFICAREA TEHNICO-PROFESIONALA A OPERATORILOR DIN CONSTRUCTII**

clasificarea companiilor din constructii dupa criteriile unitare de evaluare  
in functie de specificul lucrarilor executate, dotare tehnica, calificarea si specializarea personalului, etc

**PROMOVAREA**  
**PROFESIONALIMULUI SI A CALITATII PRODUSELOR**  
**INTRODUSE PE PIATA EUROPEANA DE PROFIL**  
informatii specializate actualizate transmise permanent  
organismelor de supraveghere si control al pietei (ISC, ANPC)





PERSPECTIVE DE DEZVOLTARE SI  
PREMIZE NECESARE

## PIATA DE TAMPLARIE SI FATADE ACTUALITATE SI PERSPECTIVE



**RELUAREA INVESTITIILOR**

- CRESTERE ECONOMICA
- CORELARE A CALITATII PRODUSELOR CU CERINTELE DE UTILIZARE

**URGENT**

- exercitarea de catre organismele de control si supraveghere a pietei a atributiilor legale
- colaborare la efectuarea controlului tematic

**IMPORTANT**

- CALITATE
- CRITERII **UNITARE** DE EVALUARE
- **respectarea** STANDARDELOR DE PRET LA ACHIZITII PUBLICE

**URGENT si IMPORTANT**

- INVESTITII MAJORE DIN FONDURI PUBLICE SAU PRIVATE
- CRESTEREA NUMARULUI LOCURILOR DE MUNCA

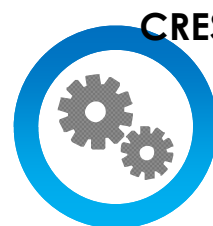


# PIATA DE TAMPLARIE SI FATADE ACTUALITATE SI PERSPECTIVE



**PREMIZE**

- CREȘTERE ECONOMICĂ
- INVESTIȚII MAJORE
- COLABORARE CU INSTITUȚIILE DE SUPRAVEGHERE ȘI CONTROL
- PROFESIONALISM ȘI COMPETENȚĂ



**CREȘTERE ECONOMICĂ**



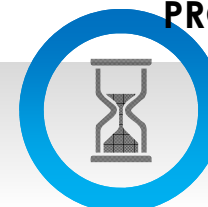
**INVESTIȚII MAJORE**



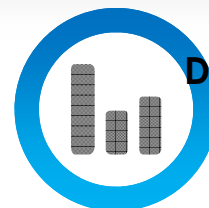
**EXPORT**



**COMPETENȚĂ**



**PROFESIONALISM**



**DEZVOLTARE**





PIATA DE TAMPLARIE SI FATADE  
ACTUALITATE SI PERSPECTIVE

**VA MULTUMIM PENTRU ATENTIE**