

# AGC GLASS BUILDING

a nearly zero-energy building

The logo for AGC, featuring the letters 'AGC' in a bold, blue, sans-serif font. The letter 'G' is stylized with a red horizontal bar extending from its top right corner.

GLASS UNLIMITED



The logo for AGC, featuring the letters 'AGC' in a bold, blue, sans-serif font. The letter 'G' is stylized with a red horizontal bar extending from its top right corner.

GLASS UNLIMITED

AGC Glass Europe, important producator european de sticla,  
a construit o cladire aproape zero energie pentru noul sau sediu general.

---

**AGC GLASS BUILDING** : 13,000 m<sup>2</sup> de sticla AGC

---

Certificare BREEAM "Excellent" inca din faza de proiectare



# AGC GLASS BUILDING

cladire aproape zero energie



Consum redus de energie

Produce energie verde

Foloseste materiale sustenabile,  
respecta bio diversitatea

a New World Of Working  
un nou mod de a lucra

## AGC GLASS BUILDING

a nearly zero-energy building

consum redus de energie



Izolatie termica eficienta pentru sezonul rece  
Control solar eficient in sezonul cald

consum redus de energie



Fatada interioara:  
Thermobel Energy<sup>N</sup> on Clearvision

Izolatie termica eficienta pentru sezonul rece  
Control solar eficient in sezonul cald



Fatada exterioara:  
Thermobel Top<sup>N+</sup> on Clearvision

Fatada double skin cu parasolare revolutionare din sticla



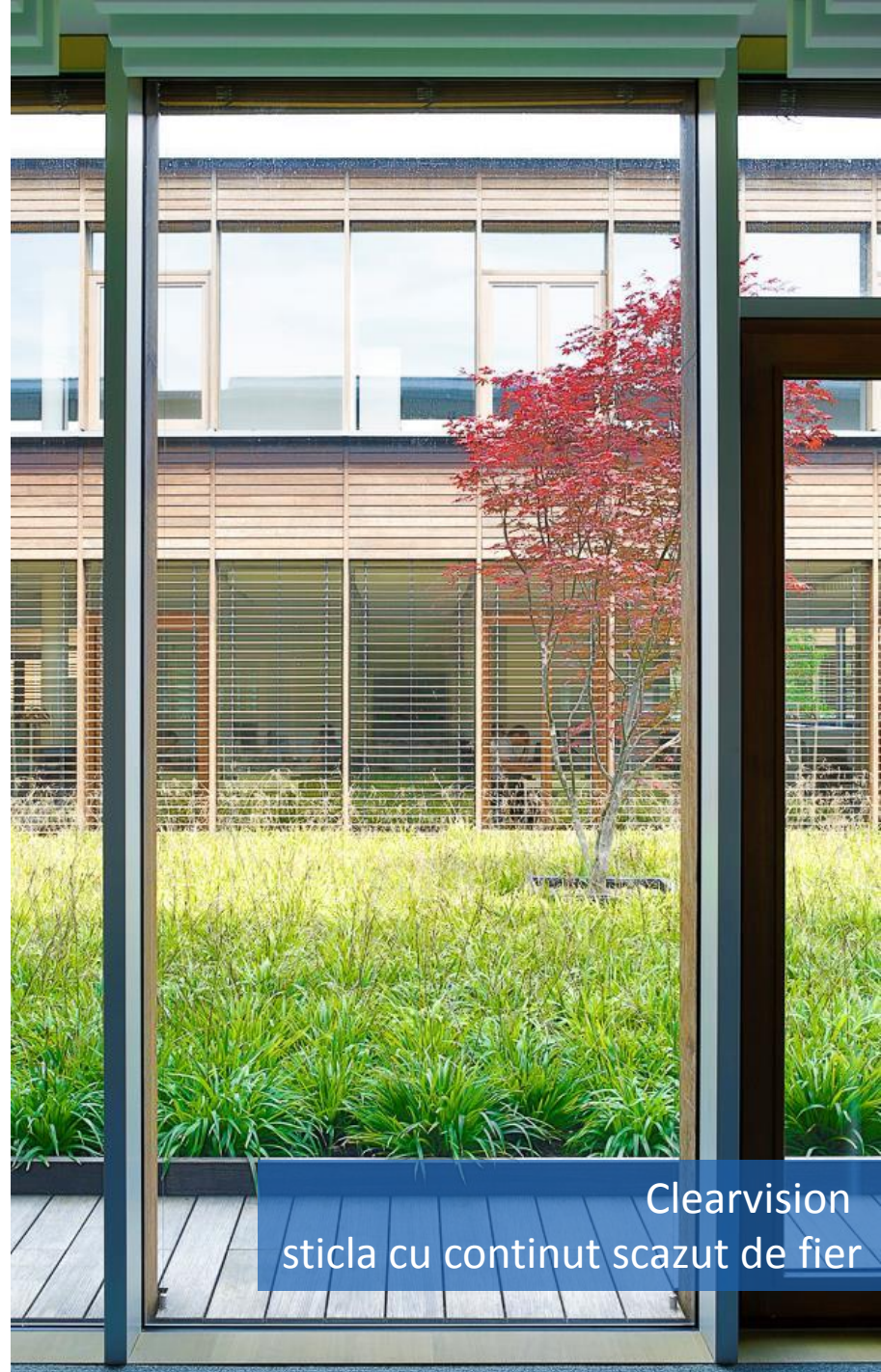
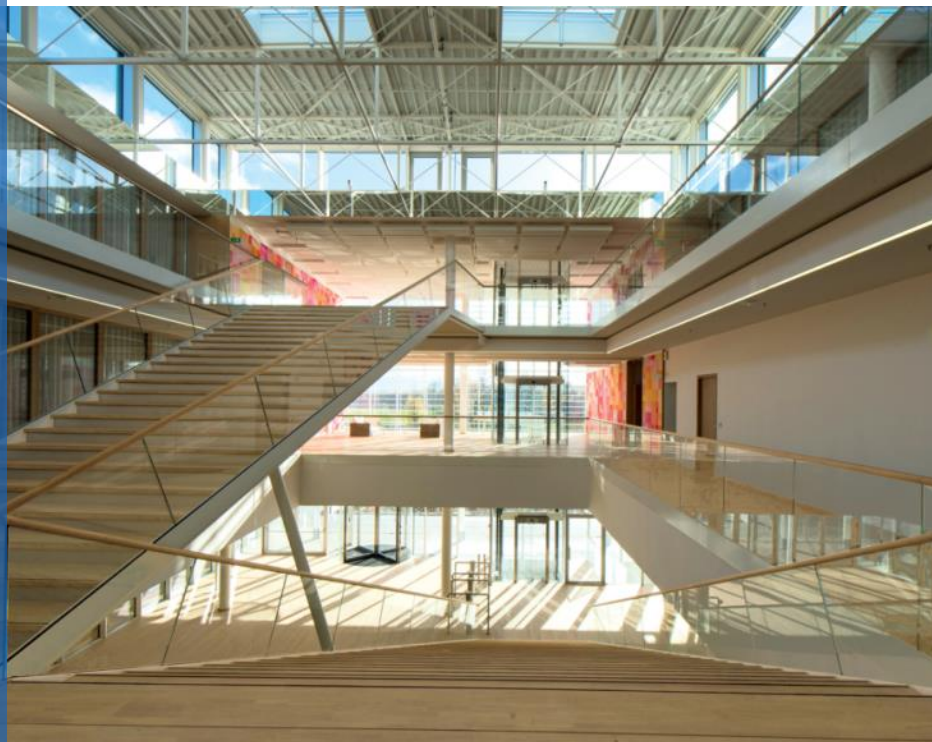
consum redus de energie



Pozitionare automata  
pentru control solar



Folosirea la maximum a luminii naturale  
100% din spatii au lumina naturala



Clearvision  
sticla cu continut scazut de fier

consum redus de energie

## AGC GLASS BUILDING

a nearly zero-energy building

producerea de energie verde



900 panouri fotovoltaice pe acoperis

producerea de energie verde



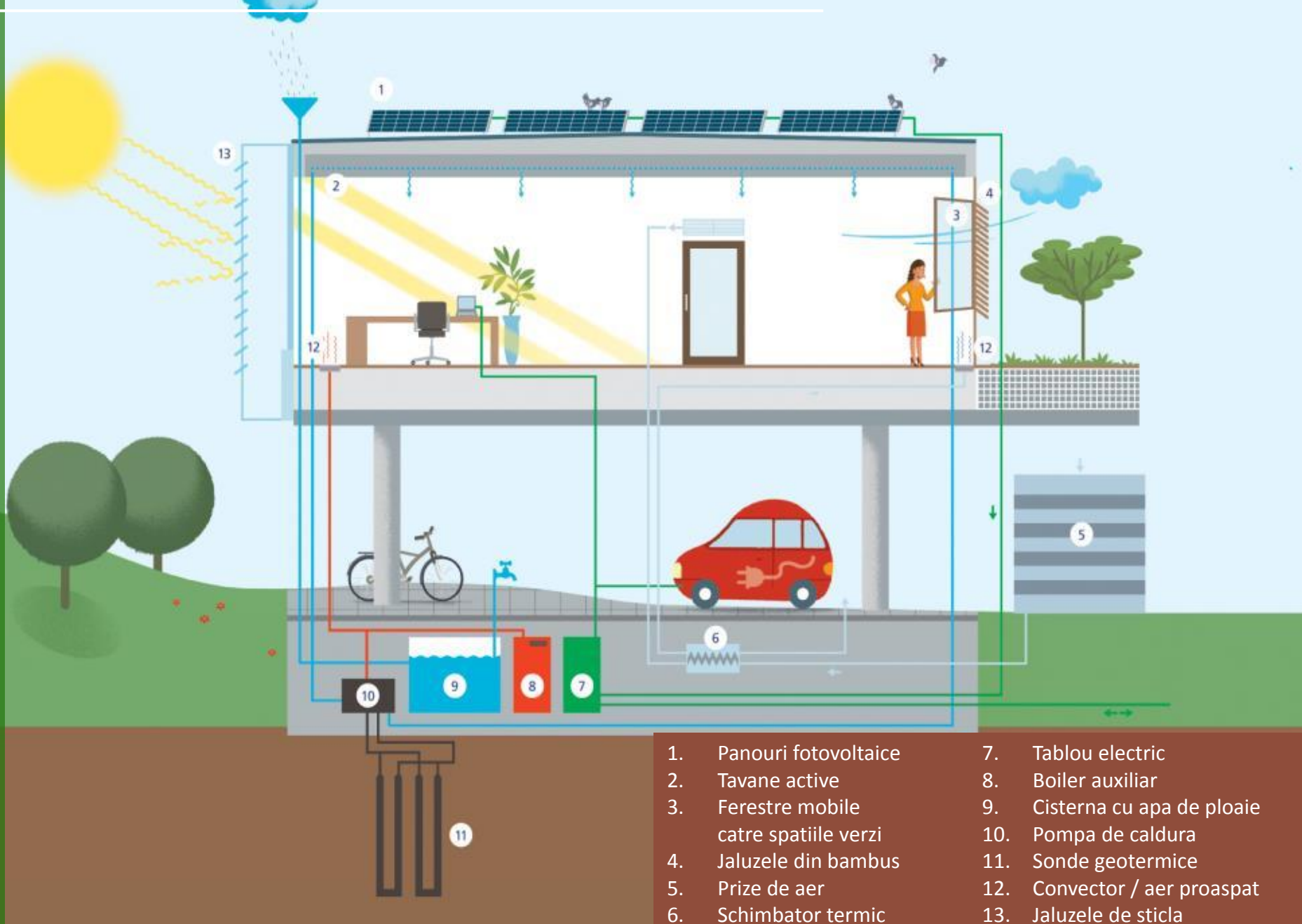
AGC TECHNOVATION CENTRE

Architect : Assar Architects

producerea de energie verde

Stopray Ultra-50 double glazing on Clearvision  
240 m<sup>2</sup> BIPV

# folosirea energiei geotermale pentru incalzire si racire



producerea de energie verde

- |    |   |     |                           |
|----|---|-----|---------------------------|
| 1. | Panouri fotovoltaice                    | 7.  | Tablou electric           |
| 2. | Tavane active                           | 8.  | Boiler auxiliar           |
| 3. | Ferestre mobile<br>catre spatiile verzi | 9.  | Cisterna cu apa de ploaie |
| 4. | Jaluzele din bambus                     | 10. | Pompa de caldura          |
| 5. | Prize de aer                            | 11. | Sonde geotermice          |
| 6. | Schimbator termic                       | 12. | Convector / aer proaspat  |
|    |   | 13. | Jaluzele de sticla        |

## AGC GLASS BUILDING

a nearly zero-energy building

folosirea materialelor sustenabile,  
protectia mediului & bio-diversivitate





Folosirea materialelor naturale, locale

---

## Prioritate pentru materiale cu certificare verde



95% din sticla folosita pentru cladirea AGC are Cradle-to-Cradle<sup>CM</sup> Silver Certification



Prioritate pentru materiale cu certificare verde

use of sustainable materials, water protection & bio-diversity



sticla float



sticla stratificata



Sticla cu depunere magnetronica

sticla decorativa



Protectia apelor  
Colectarea apei de ploaie si a apei gri pentru refolosire

---



80% infiltrare in sol, multumita suprafatelor permeabile, a vegetatiei si a zonelor inundabile

biodivesivitate



albine



## AGC GLASS BUILDING

a nearly zero-energy building

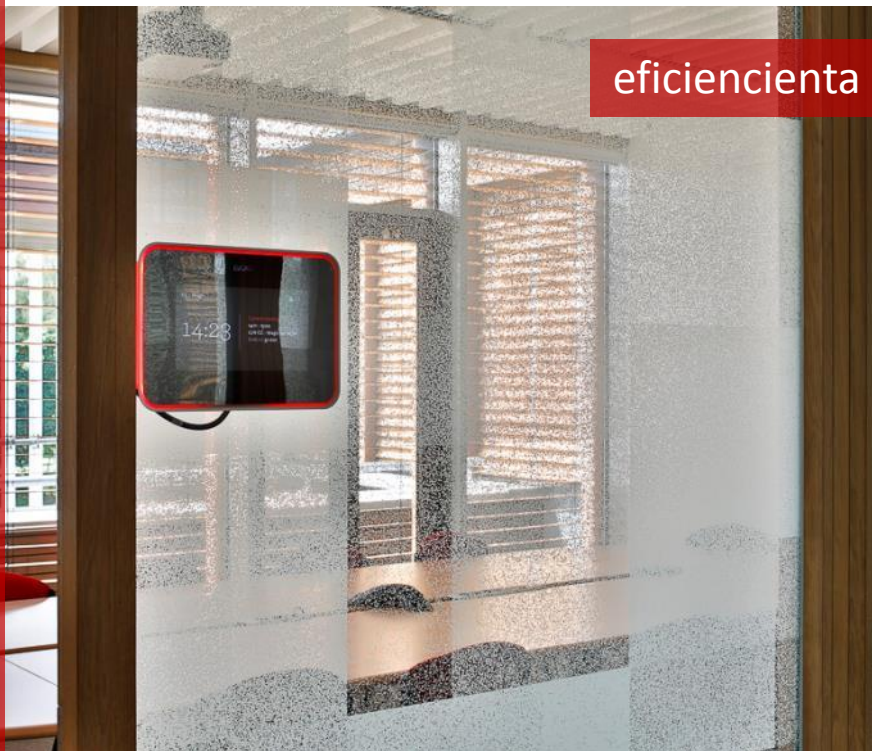
a New World Of Working  
un nou mod de lucru



concept NWOW bazat pe 4 valori



colaborare flexibilitate



eficienta



feel good

# AGC GLASS BUILDING

a nearly zero-energy building

Courtesy of

Project: Philippe SAMYN and PARTNERS sprl, architects and engineers – BEAI sa

Artistic integration: Georges Meurant

Photos: Marie-Françoise Plissart, Jean-Michel Byl

Aerial views: Simon Schmitt - [www.globalview.be](http://www.globalview.be)



GLASS UNLIMITED



# AGC GLASS BUILDING

a nearly zero-energy building

Mai 2015

© AGC Glass Europe - Corporate Communication  
More info on [www.agc-glass.eu/AGCGlassBuilding](http://www.agc-glass.eu/AGCGlassBuilding)



GLASS UNLIMITED

